

# EQMS Maturity Model



## Introduction

Managing Enterprise Quality Management Software (EQMS) is an entirely different task based on where a company stands on the EQMS Maturity Model. During the initial implementation and configuration, companies focus on ensuring the system is validated and meets their initial requirements. This includes selecting appropriate configuration options such as users, roles, permissions, writing procedures and guides, migrating documents and data, establishing implementation responsibilities and system ownership, and training end-users. Then comes a first rollout/stabilization period until a state of control is reached. Eventually, when the team is experienced with their EQMS, day-to-day operations run efficiently, and it's time to consider expanding the scope to automate operations further and gain more or better insights.

## Aim

Built from years of lessons learned from experiences, SOLABS proposes a model to help companies understand their current level of maturity with automation of quality operations, and more importantly develop a road map of future initiatives. It also provides companies interested in purchasing and implementing EQMS with a tool to help them prioritize the initial areas of focus.

This model is key to help senior managers understand the different aspects and components to support an automated quality system. It is also useful to demonstrate the need for additional resources when required to move from one level to the next.

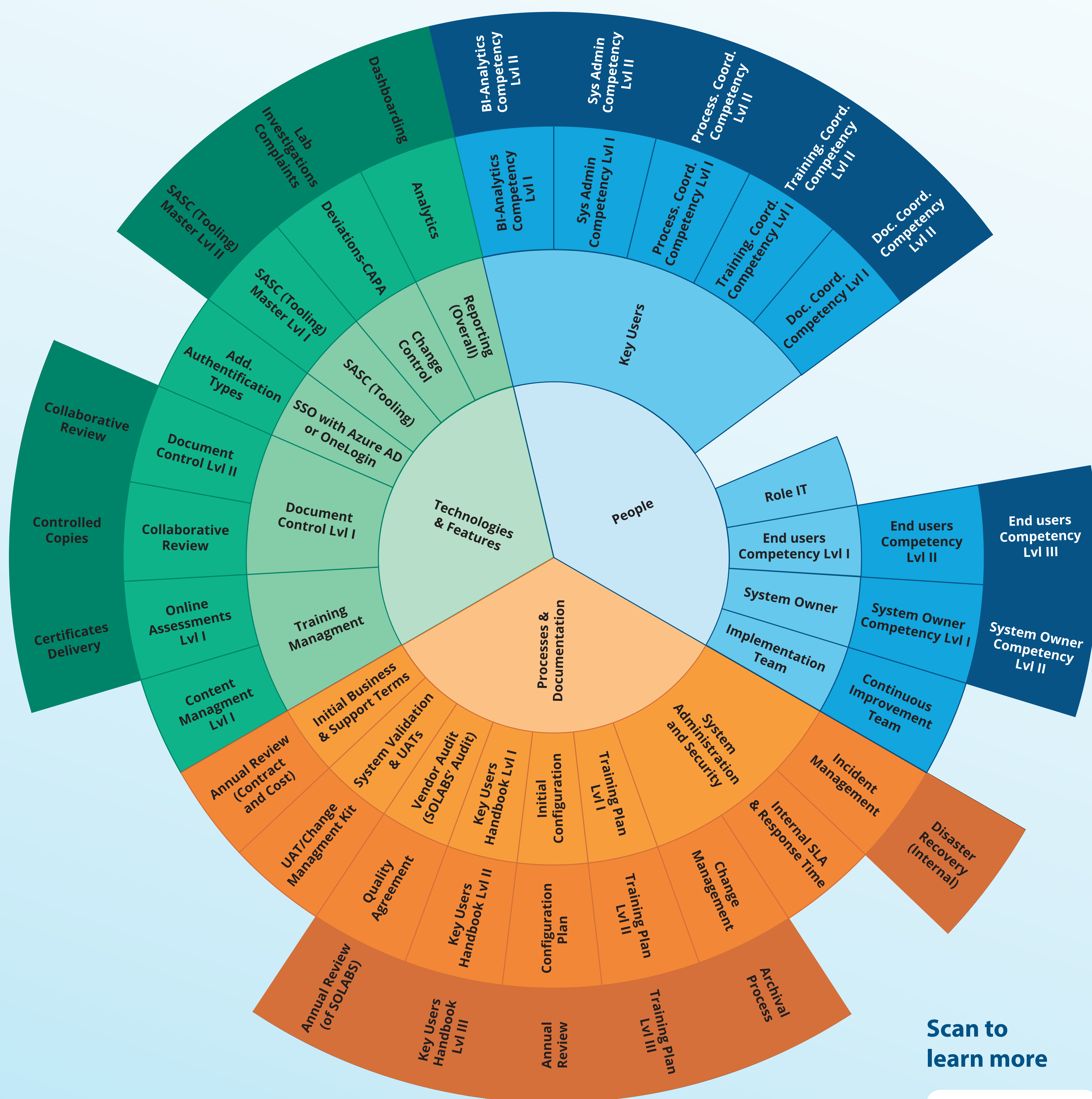
## How this works

The model focuses on different aspects in the areas of People, Processes, and Technologies. It exposes in a simple representation what needs to be mastered at a specific level before moving on to the next level. Each level is specific to each company based on size, business type, corporate maturity, area of focus, etc.

Objectives and activities that need to be completed first are represented on the first level of the maturity model. Once the first level is stable, moving on to the second level becomes possible.

Certain elements may be dependent on the completion of a prior level.

Completed objectives are highlighted to give an overview of the currently achieved maturity level.



## Contact Information

**Philippe Gaudreau**

pgaudreau@solabs.com, 1-877-322-1368 ext. 200

**Etienne Langlois**

elanglois@solabs.com, 1-514-287-1368 ext.251

**Ericka Moore**

emoore@solabs.com, 1-877-322-1368 ext. 219

### About SOLABS

SOLABS is a North American leader in integrated EQMS for the Life Sciences industry. The company helps clients Learn from Experience and become better organizations with its core offering SOLABS QM10©.

Scan to learn more

